

Accelerate your startup's growth

through Corporate Innovation Programmes in Singapore



FACEBOOK ACCELERATOR

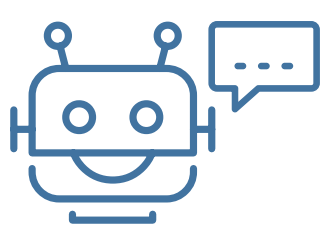
CISCO CO-INNOVATION CENTRE

SAP.iO FOUNDRY

FACEBOOK

An accelerator programme that helps startups grow via working with Facebook's platforms, products, and technologies. It offers 1:1 mentorship, training, and access to a global network of startups, founders and industry experts.

IN PARTNERSHIP WITH JUMPER



AI-Powered Chatbots

Developed an AI-enabled, omnichannel conversational commerce solution that helps brands connect with customers.

SUCCESSFUL COLLABORATION

Integrated with more than 10 Facebook platforms like Messenger API, Instagram Direct Messaging, FB Live and more. Jumper has benefitted from office hours with Facebook experts in areas such as messaging and market expansion.

OUTCOMES

50 NEW ENTERPRISE CLIENTS

20x MONTH-ON-MONTH REVENUE GROWTH

4x Sales ACHIEVED FOR L'OREAL* THROUGH FACEBOOK LIVE

- STARTUP OUTCOMES
- COLLABORATION OUTCOMES

*at the Virtual Beauty Festival



A first in ASEAN, the Cisco Co-Innovation Centre brings together industry, government and startups to develop network-data enabled solutions that can solve problems unique to the region.

IN PARTNERSHIP WITH INTERCORP SOLUTIONS



Biometric Authentication

Created a cloud-based biometrics authentication platform to offer greater visibility of data for work management.

SUCCESSFUL COLLABORATION

Worked closely with Cisco technical teams to leverage Cisco's advanced suite of products. For example, Intercorp integrated its solution to Cisco Webex to create a productivity measurement and analysis feature.

OUTCOMES

2 NEW SOLUTIONS DEVELOPED

30% Growth EXPECTED IN COLLABORATION SALES IN THE NEXT 18 MONTHS

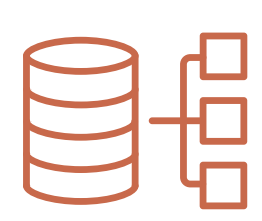
UNLOCKED POTENTIAL TO SCALE IN **Southeast Asia**

- STARTUP OUTCOMES
- COLLABORATION OUTCOMES



The SAP.iO Foundry Singapore programme integrates startups with complementary solutions to SAP technologies to help them enhance their go-to-market strategies and execution.

IN PARTNERSHIP WITH STAPLE



Data Processing

Designed an AI-enabled software that is capable of understanding and extracting data in more than 90 languages.

SUCCESSFUL COLLABORATION

Integrated with SAP Concur, an online travel and expense management system for businesses. Staple is extending their solution by building out automation functionalities using SAP Intelligent Robotic Process Automation.

OUTCOMES

IDENTIFIED NOVEL USE CASES FOR USERS IN **Russia, China, Hong Kong and India**

19 CUSTOMER OPPORTUNITIES IDENTIFIED

↑27% INCREASE IN HEADCOUNT

- STARTUP OUTCOMES
- COLLABORATION OUTCOMES

Subscribe and get notified whenever a new innovation programme is launched.