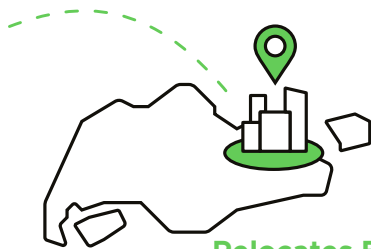




# Schneider Electric's growing footprint in Singapore



## 2015

### Relocates East Asia & Japan RHQ to Singapore

The company relocates its East Asia and Japan (EAJ) regional headquarters (RHQ) to Singapore with an investment of €65 million (S\$102 million) to expand its presence in the country.



## 2019

### Commits US\$11.7 million to develop companies

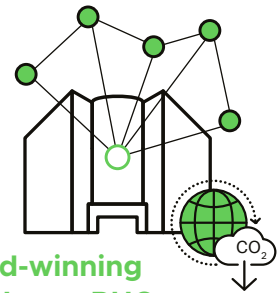
Schneider Electric commits US\$11.7 million (S\$16 million) over four years to incubate and develop up to four Singapore-based companies with global growth potential.



## 1973

### Sets up sales and production facilities

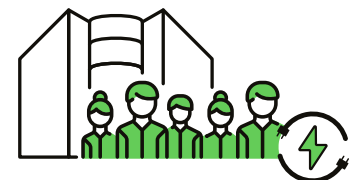
Schneider Electric first enters Singapore in 1973 by setting up its sales and production facilities.



## 2018

### Opens award-winning East Asia & Japan RHQ

Schneider Electric consolidates all operations in Singapore under one roof at its new EAJ RHQ, the site for the company's first large-scale Innovation Hub in Asia. The hub develops customised solutions to optimise energy efficiencies for building, healthcare, data centre, oil and gas, and utilities sectors.



## BEYOND 2020

### En route to achieving carbon neutral goal, a first for company ecosystem

Schneider Electric's RHQ is en route to achieving its carbon neutral goal as part of the company's plan to run all its buildings on renewable energy by 2030. Today, Schneider Electric has over 1,400 employees in Singapore.