

# What Makes Singapore a Trusted Hub in Global Supply Chains?



Find out why leading manufacturers and cargo owners are orchestrating their regional and global supply chains from Singapore, and learn how logistics players and carriers contribute to a robust supply chain ecosystem here.



- Growing base of Supply Chain Management (SCM) hubs
- World-class logistics hub
- Largest air cargo hub in Southeast Asia
- Tuas Port will be the world's largest fully automated terminal

## 1 PREFERRED SCM HUB FOR GLOBAL MANUFACTURERS AND CARGO OWNERS

Leading manufacturers and cargo owners such as Asahi, Agilent Technologies, Henkel, Meijer, P&G, Schneider Electric, VF Corporation and 3M have set up their [SCM Hubs in Singapore](#). In a Gartner survey, close to **50%** of respondents indicated they are planning to expand or set up at least one more supply chain function hub in South Asia or the Southeast Asian region, within the next 3 years<sup>1</sup>. They are supported by:



**>70,000**  
supply chain professionals in Singapore.



**3,600**  
graduates with requisite skill sets to take on SCM jobs join the workforce annually.

## 2 WORLD-CLASS LOGISTICS SERVICES HUB

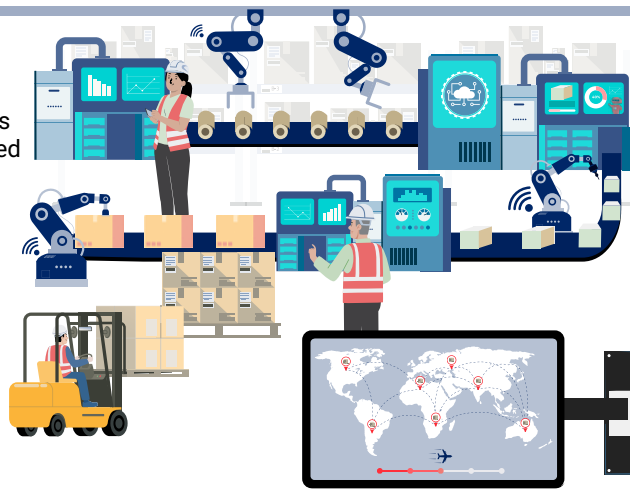
Globally leading logistics players have set up regional or global headquarter functions here, using Singapore as a base to develop best-in-class warehouses, build specialised cargo handling capabilities and conduct innovation activities to serve global clients.



**No. 1** in 2023 in World Bank's Logistics Performance Infrastructure Index



**Under 10 minutes**  
customs clearance dwell time<sup>2</sup>



## 3 TRUSTED AIR AND SEA CONNECTIVITY HUB

The [expanded Changi Air Cargo Hub](#) will have an **increased cargo handling capacity of 5.4 million tonnes per annum** when fully developed, up from the **current 3 million tonnes**. The expanded hub comprises the new Changi East Industrial Zone, Changi Airfreight Centre, Airport Logistics Park Singapore (ALPS) and the newly announced ALPS2.

[Tuas Mega Port](#) will be the world's largest fully automated port, when it is fully completed in the 2040s. The port will have a **handling capacity of 65 million TEUs<sup>3</sup> per annum**, almost double the volume of 37.5 million TEUs handled in 2021.



<sup>1</sup>Findings from the "2023 Gartner Trends in APAC Supply Chain Network" Survey

<sup>2</sup>The data is based on a 2020 Time Release Study for containerised sea cargo.

<sup>3</sup>TEU refers to twenty-foot equivalent units, which is used to measure cargo capacity.